

T12 Tech – Aprilia RS250

Chain Adjuster Assembly Guide

Required tools:

5mm Hex Key

3mm Hex Key

8mm Spanner



Remove the wheel, old adjuster blocks and adjuster screw from both sides of the swing-arm.



Turn the adjuster screw clockwise to open the adjuster all the way, this allows room for the 5mm Hex Key.



Fit the M8x25 hex bolt into the swing-arm, this hold the chain adjuster in place.

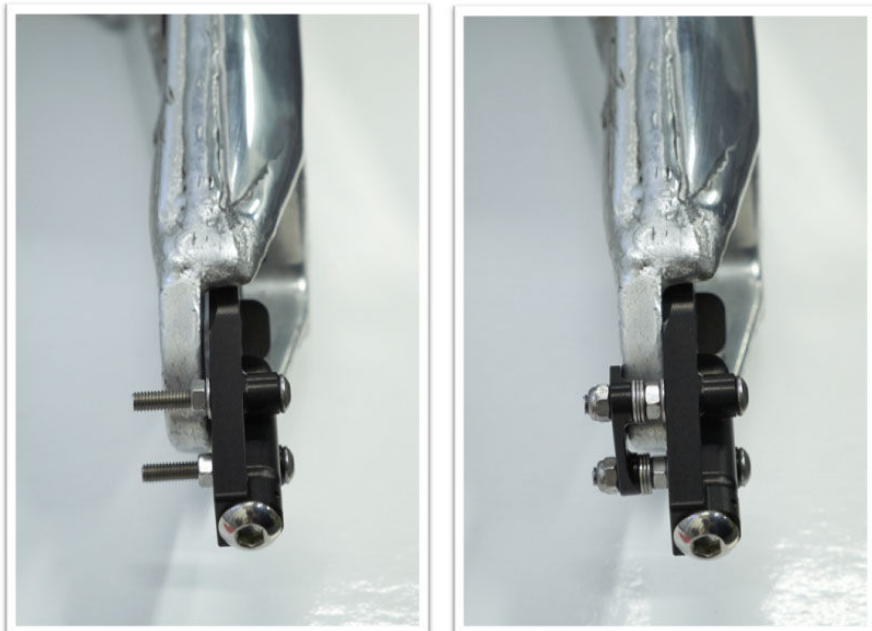
Use Loctite 243 or equivalent product to prevent loss of bolt due to vibration.

Make sure to select the correct adjuster for the side of the bike you're working on.



Fit the two M5x35mm Hex bolts to the chain adjuster.

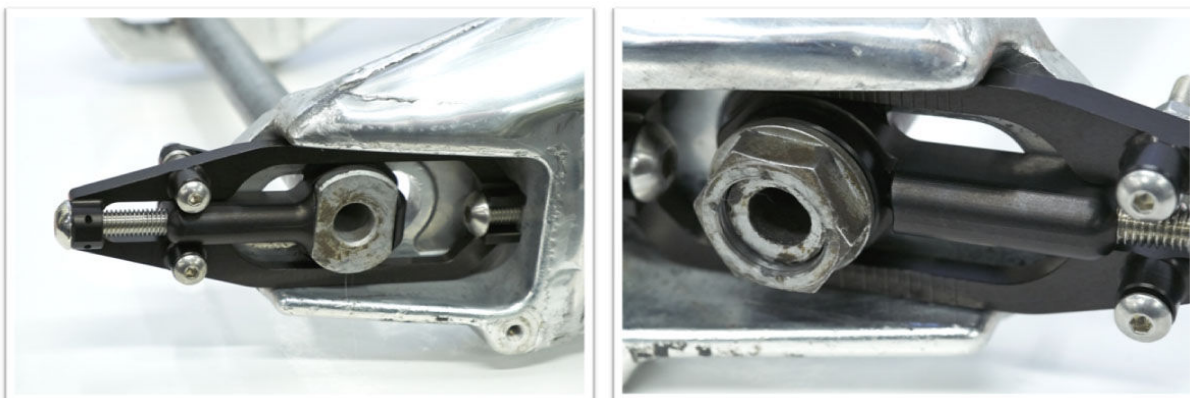
Fit x1 washer to each bolt then 1 plain nut as shown in the picture below LEFT.



Now fit 3 washers to each bolt followed by the back plate and locknuts. ENSURE the flat side of the back plate faces the wheel side as shown above RIGHT.

Repeat on the opposite side of the swing-arm.

Fit the wheel and axle. Axle nut on the LH side of the bike.



Now fit the nut spacer and nut, torque load in accordance with the Aprilia service manual specifications.

